



Cylinders **AsixP8**

Security with **8 P**ins



AsixP8 Cylinders



AsixP8 provides security and reliable performance in master key systems, making it the perfect solution for managing access in residential as well as in public and commercial buildings.



AsixP8



8-Pin key biting system



Key

SECURITY

- **8-pin** key biting system on 2 rows.
- **Over 260,000 possible combinations** (different keys).
- Excellent access management potential: can **manage 37,000 cylinders** with a single master key.



Key head with ergonomic removable plastic insert.

Personal Card

The Personal Card allows you to obtain exact copies of keys using an electronic key cutting machine, thanks to the code printed on it.



Cylinder

SECURITY

Attack resistance

- **BKP PATENT PCT/WO 2007/074163A1**
Certified protection against bumping, thanks to BKP patented technology (Bump Key Power).
- **Certified protection against drilling**, thanks to the biting system in carbonitrided steel.
- High **resistance to forced entry** using the wax impression technique, thanks to the special configuration of the springs.

Construction key function

When AsixP8 is configured as a construction key, it becomes **AsixP8 PRO**, the ideal solution when armoured doors requiring basic security are to be installed.

The first time the owner of the apartment or office uses his owner key, the construction key is rendered inoperative.



AsixP8PRO

AsixP8 Cylinders



Key

TECHNICAL FEATURES

- Flat reversible.
- In nickel-plated brass.
- Key blade 17 mm long, compatible with protective roses.
- Key head with ergonomic removable plastic insert.
- Numerical code on key bow.
- Key thickness 2.9 mm.
- Depth 0.48 mm.



Cylinder

TECHNICAL FEATURES

- 8-pin key biting system (6 active, 2 passive).
- Brass body.
- Brass plugs.
- Clutch-type cam in self-lubricating sintered DIN steel.
- Pins and drivers in carbonitrided steel.
- Side pads in carbonitrided steel.
- Phosphor bronze and steel springs.
- 100,000 cycles (in compliance with EN1303: 2015 durability - Grade 6).

Finishes

- Standard: nickel-plated brass (fin.12).
- On request: sanded brass (fin.00).

Supplied as standard

- 3 keys + 3 nylon covers.
- Personal card.
- Fixing screw.

In compliance with EN 1303: 2015.

Key Related Security: 6

1 2 3 4 5 6

Attack Resistance: C

0 A B C D

Durability: 6

4 5 6



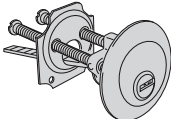
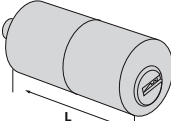
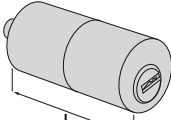
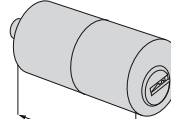
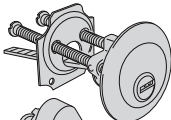
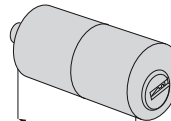
TYPE	DESCRIPTION	DIM.	L	A	B	PINS	KEY ITEM	kg		ITEM				
								UNIT	PIECES	Type	Dim.	Hand	Fin.	
	<ul style="list-style-type: none"> Double cylinder with clutch system 	30/30	59	29,5	29,5	8	100670100	0,235	6	1	OQ311	07	0	12
		28/34	61	27,5	33,5	8	100670100	0,234	6	1	OQ311	06	0	12
		28/36	63	27,5	35,5	8	100670100	0,240	6	1	OQ311	09	0	12
		30/35	64	29,5	34,5	8	100670100	0,243	6	1	OQ311	26	0	12
		33/33	65	32,5	32,5	8	100670100	0,258	6	1	OQ311	10	0	12
		35/35	69	34,5	34,5	8	100670100	0,272	6	1	OQ311	13	0	12
		40/30	69	39,5	29,5	8	100670100	0,272	6	1	OQ311	12	0	12
		28/43	70	27,5	42,5	8	100670100	0,262	6	1	OQ311	11	0	12
		30/45	74	29,5	44,5	8	100670100	0,274	6	1	OQ311	27	0	12
		35/40	74	34,5	39,5	8	100670100	0,274	6	1	OQ311	28	0	12
		30/50	79	29,5	49,5	8	100670100	0,301	6	1	OQ311	17	0	12
		35/45	79	34,5	44,5	8	100670100	0,289	6	1	OQ311	19	0	12
		40/40	79	39,5	39,5	8	100670100	0,289	6	1	OQ311	18	0	12
		30/55	84	29,5	54,5	8	100670100	0,304	6	1	OQ311	33	0	12
		35/50	84	34,5	49,5	8	100670100	0,360	6	1	OQ311	31	0	12
		40/45	84	39,5	44,5	8	100670100	0,360	6	1	OQ311	30	0	12
		30/60	89	29,5	59,5	8	100670100	0,308	6	1	OQ311	20	0	12
		35/55	89	34,5	54,5	8	100670100	0,320	6	1	OQ311	32	0	12
		40/50	89	39,5	49,5	8	100670100	0,332	6	1	OQ311	21	0	12
		45/45	89	44,5	44,5	8	100670100	0,320	6	1	OQ311	29	0	12
		30/65	94	29,5	64,5	8	100670100	0,333	6	1	OQ311	41	0	12
		35/60	94	34,5	59,5	8	100670100	0,334	6	1	OQ311	38	0	12
		40/55	94	39,5	54,5	8	100670100	0,390	6	1	OQ311	42	0	12
		45/50	94	44,5	49,5	8	100670100	0,355	6	1	OQ311	39	0	12
		30/70	99	29,5	69,5	8	100670100	0,334	6	1	OQ311	24	0	12
		35/65	99	34,5	64,5	8	100670100	0,349	6	1	OQ311	22	0	12
		40/60	99	39,5	59,5	8	100670100	0,349	6	1	OQ311	25	0	12
		45/55	99	44,5	54,5	8	100670100	0,349	6	1	OQ311	43	0	12
		50/50	99	49,5	49,5	8	100670100	0,349	6	1	OQ311	23	0	12
		40/65	104	39,5	64,5	8	100670100	0,349	6	1	OQ311	44	0	12
		45/60	104	44,5	59,5	8	100670100	0,378	6	1	OQ311	54	0	12
		30/75	104	29,5	74,5	8	100670100	0,400	6	1	OQ311	56	0	12
		35/70	104	34,5	69,5	8	100670100	0,402	6	1	OQ311	49	0	12
		55/50	104	54,5	49,5	8	100670100	0,378	6	1	OQ311	64	0	12
		35/75	109	34,5	74,5	8	100670100	0,378	6	1	OQ311	57	0	12
		30/80	109	29,5	79,5	8	100670100	0,420	6	1	OQ311	37	0	12
		45/65	109	44,5	64,5	8	100670100	0,378	6	1	OQ311	45	0	12
		40/70	109	39,5	69,5	8	100670100	0,410	6	1	OQ311	35	0	12
		50/60	109	49,5	59,5	8	100670100	0,410	6	1	OQ311	36	0	12
		55/55	109	54,5	54,5	8	100670100	0,410	6	1	OQ311	70	0	12
30/85	114	29,5	84,5	8	100670100	0,420	6	1	OQ311	77	0	12		
50/65	114	49,5	64,5	8	100670100	0,420	6	1	OQ311	65	0	12		
55/60	114	54,5	59,5	8	100670100	0,420	6	1	OQ311	71	0	12		
40/75	114	39,5	74,5	8	100670100	0,420	6	1	OQ311	59	0	12		
45/70	114	44,5	69,5	8	100670100	0,420	6	1	OQ311	61	0	12		
30/90	119	29,5	89,5	8	100670100	0,450	6	1	OQ311	52	0	12		
40/80	119	39,5	79,5	8	100670100	0,450	6	1	OQ311	60	0	12		
60/60	119	59,5	59,5	8	100670100	0,450	6	1	OQ311	40	0	12		
50/70	119	49,5	69,5	8	100670100	0,450	6	1	OQ311	66	0	12		
30/100	129	29,5	99,5	8	100670100	0,460	1	1	OQ311	53	0	12		

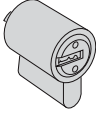
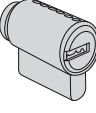
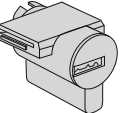
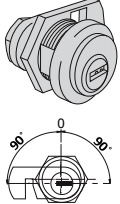
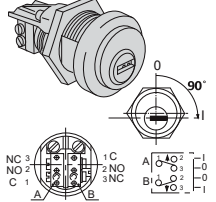
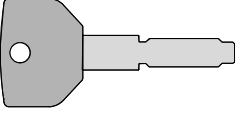
TYPE	DESCRIPTION	DIM.	L	A	B	PINS	KEY ITEM	kg		ITEM				
								UNIT	PIECES	Type	Dim.	Hand	Fin.	
	<ul style="list-style-type: none"> Single cylinder with 8-position adjustable cam Item 10Q31418012 fixed cam 	25/10	34,5	24,5	10	8	100670100	0,185	6	1	0Q314	18	0	12
		30/10	39,5	29,5	10	8	100670100	0,185	6	1	0Q314	02	0	12
		35/10	44,5	34,5	10	8	100670100	0,185	6	1	0Q314	07	0	12
		40/10	49,5	39,5	10	8	100670100	0,195	6	1	0Q314	03	0	12
		45/10	54,5	44,5	10	8	100670100	0,195	6	1	0Q314	08	0	12
		50/10	59,5	49,5	10	8	100670100	0,215	6	1	0Q314	04	0	12
		55/10	64,5	54,5	10	8	100670100	0,215	6	1	0Q314	35	0	12
		60/10	69,5	59,5	10	8	100670100	0,225	6	1	0Q314	05	0	12
		65/10	74,5	64,5	10	8	100670100	0,245	6	1	0Q314	21	0	12
		70/10	79,5	69,5	10	8	100670100	0,245	6	1	0Q314	06	0	12
		80/10	89,5	79,5	10	8	100670100	0,275	6	1	0Q314	20	0	12
		95/10	104,5	94,5	10	8	100670100	0,290	6	1	0Q314	13	0	12

	<ul style="list-style-type: none"> Double cylinder pre-set for thumb turn installation On request: Thumb turns items 06353, 06355, 06356, 06357 	30/30	59	29,5	29,5	8	100670100	0,244	6	1	0Q312	07	0	12
		30/35	64	29,5	34,5	8	100670100	0,264	6	1	0Q312	26	0	12
		35/30	64	34,5	29,5	8	100670100	0,259	6	1	0Q312	81	0	12
		33/33	65	32,5	32,5	8	100670100	0,262	6	1	0Q312	10	0	12
		30/40	69	29,5	39,5	8	100670100	0,267	6	1	0Q312	82	0	12
		35/35	69	34,5	34,5	8	100670100	0,279	6	1	0Q312	13	0	12
		40/30	69	39,5	29,5	8	100670100	0,279	6	1	0Q312	12	0	12
		35/40	74	34,5	39,5	8	100670100	0,279	6	1	0Q312	28	0	12
		30/45	74	29,5	44,5	8	100670100	0,294	6	1	0Q312	27	0	12
		40/35	74	39,5	34,5	8	100670100	0,294	6	1	10Q312	83	0	12
		45/30	74	44,5	29,5	8	100670100	0,294	6	1	10Q312	91	0	12
		30/50	79	29,5	49,5	8	100670100	0,294	6	1	10Q312	17	0	12
		35/45	79	34,5	44,5	8	100670100	0,318	6	1	0Q312	19	0	12
		40/40	79	39,5	39,5	8	100670100	0,309	6	1	0Q312	18	0	12
		40/45	84	39,5	44,5	8	100670100	0,309	6	1	0Q312	30	0	12
		30/60	89	29,5	59,5	8	100670100	0,309	6	1	0Q312	20	0	12
		40/50	89	39,5	49,5	8	100670100	0,324	6	1	0Q312	21	0	12
		45/45	89	44,5	44,5	8	100670100	0,324	6	1	0Q312	29	0	12
		45/50	94	44,5	49,5	8	100670100	0,324	6	1	0Q312	39	0	12
		40/60	99	39,5	59,5	8	100670100	0,326	6	1	0Q312	25	0	12
		50/50	99	49,5	49,5	8	100670100	0,353	6	1	0Q312	23	0	12

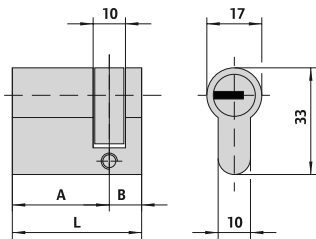
	<ul style="list-style-type: none"> Double cylinder pre-set for thumb turn installation, with adjustable shaft For use with inside escutcheon item 1.06458.20 On request: Thumb turns items 06353, 06355, 06356, 0635 	30/30	59	29,5	29,5	8	100670100	0,284	6	1	0Q317	07	0	12
		35/30	64	34,5	29,5	8	100670100	0,294	1	1	0Q317	81	0	12
		40/30	69	39,5	29,5	8	100670100	0,312	1	1	0Q317	12	0	12
		45/30	74	44,5	29,5	8	100670100	0,320	1	1	0Q317	91	0	12
		50/30	79	49,5	29,5	8	100670100	0,329	1	1	0Q317	90	0	12
		55/30	84	54,5	29,5	8	100670100	0,345	1	1	0Q317	92	0	12
		60/30	89	59,5	29,5	8	100670100	0,359	1	1	0Q317	87	0	12
		65/30	94	64,5	29,5	8	100670100	0,359	1	1	0Q317	A3	0	12
		70/30	99	69,5	29,5	8	100670100	0,370	1	1	0Q317	88	0	12
		80/30	109	79,5	29,5	8	100670100	0,359	1	1	0Q317	93	0	12
		90/30	119	89,5	29,5	8	100670100	0,392	1	1	0Q317	C6	0	12
		100/30	129	99,5	29,5	8	100670100	0,398	1	1	0Q317	C7	0	12

TYPE	DESCRIPTION	DIM.	L	A	B	PINS	KEY ITEM	Kg		ITEM						
								UNIT	PIECES	Type	Dim.	Hand	Fin.	Pers	Spec	
	<ul style="list-style-type: none"> Double cylinder Configuration construction key 1+5 	30/30	59	29,5	29,5	8	100670100	0,235	6	1	0Q310	07	0	12	SD	
		28/32	59	27,5	31,5	8	100670100	0,234	6	1	0Q310	08	0	12	SD	
		30/35	64	29,5	34,5	8	100670100	0,243	6	1	0Q310	26	0	12	SD	
		35/35	69	34,5	34,5	8	100670100	0,272	6	1	0Q310	13	0	12	SD	
		40/30	69	39,5	29,5	8	100670100	0,272	6	1	0Q310	12	0	12	SD	
		30/45	74	29,5	44,5	8	100670100	0,274	6	1	0Q310	27	0	12	SD	
		35/40	74	34,5	39,5	8	100670100	0,274	6	1	0Q310	28	0	12	SD	
		30/50	79	29,5	49,5	8	100670100	0,301	6	1	0Q310	17	0	12	SD	
		35/45	79	34,5	44,5	8	100670100	0,289	6	1	0Q310	19	0	12	SD	
		40/40	79	39,5	39,5	8	100670100	0,289	6	1	0Q310	18	0	12	SD	
		30/55	84	29,5	54,5	8	100670100	0,304	6	1	0Q310	33	0	12	SD	
		35/50	84	34,5	49,5	8	100670100	0,360	6	1	0Q310	31	0	12	SD	
		40/45	84	39,5	44,5	8	100670100	0,360	6	1	0Q310	30	0	12	SD	
		35/55	89	34,5	54,5	8	100670100	0,308	6	1	0Q310	32	0	12	SD	
		30/60	89	29,5	59,5	8	100670100	0,308	6	1	0Q310	20	0	12	SD	
		40/50	89	39,5	49,5	8	100670100	0,332	6	1	0Q310	21	0	12	SD	
		45/45	89	44,5	44,5	8	100670100	0,320	6	1	0Q310	29	0	12	SD	
		35/60	94	34,5	59,5	8	100670100	0,320	6	1	0Q310	38	0	12	SD	
		30/70	99	29,5	69,5	8	100670100	0,334	6	1	0Q310	24	0	12	SD	
		40/60	99	39,5	59,5	8	100670100	0,349	6	1	0Q310	25	0	12	SD	
35/65	99	34,5	64,5	8	100670100	0,349	6	1	0Q310	22	0	12	SD			
50/50	99	49,5	49,5	8	100670100	0,349	6	1	0Q310	23	0	12	SD			
40/70	109	39,5	69,5	8	100670100	0,410	6	1	0Q310	35	0	12	SD			
50/60	109	49,5	59,5	8	100670100	0,410	6	1	0Q310	36	0	12	SD			
30/80	110	29,5	79,5	8	100670100	0,410	6	1	0Q310	37	0	12	SD			
	<ul style="list-style-type: none"> Single cylinder with 8-position adjustable cam Item 10Q314-18012 fixed cam Configuration construction key 1+2 KA series configuration construction key 1+1 	25/10	34,5	24,5	10	8	100670100	0,185	6	1	0Q314	18	0	12	NV	
		25/10	34,5	24,5	10	8	100670100	0,185	6	1	0Q314	18	0	12	NV	KA
		30/10	39,5	29,5	10	8	100670100	0,185	6	1	0Q314	02	0	12	NV	KA
		30/10	39,5	29,5	10	8	100670100	0,185	6	1	0Q314	02	0	12	NV	KA
		35/10	44,5	34,5	10	8	100670100	0,185	6	1	0Q314	07	0	12	NV	KA
		40/10	49,5	39,5	10	8	100670100	0,185	6	1	0Q314	03	0	12	NV	KA
40/10	49,5	39,5	10	8	100670100	0,185	6	1	0Q314	03	0	12	NV	KA		
	<ul style="list-style-type: none"> Double cylinder pre-set for thumb turn installation, with adjustable shaft For use with inside escutcheon item 1.06458.20 On request: Thumb turns items 06353, 06355, 06356, 06357 Configuration construction key 1+5 	30/30	59	29,5	29,5	8	100670100	0,284	6	1	0Q317	07	0	12	SD	
		35/30	64	34,5	29,5	8	100670100	0,294	1	1	0Q317	81	0	12	SD	
		40/30	69	39,5	29,5	8	100670100	0,312	1	1	0Q317	12	0	12	SD	
		45/30	74	44,5	29,5	8	100670100	0,320	1	1	0Q317	91	0	12	SD	
		50/30	79	49,5	29,5	8	100670100	0,329	1	1	0Q317	90	0	12	SD	
		55/30	84	54,5	29,5	8	100670100	0,329	1	1	0Q317	92	0	12	SD	
		60/30	89	59,5	29,5	8	100670100	0,359	1	1	0Q317	87	0	12	SD	
		65/30	89	64,5	29,5	8	100670100	0,359	1	1	0Q317	A3	0	12	SD	
		70/30	99	69,5	29,5	8	100670100	0,370	1	1	0Q317	88	0	12	SD	

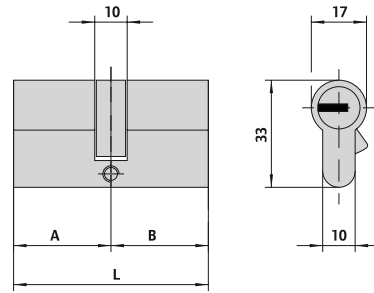
TYPE	DESCRIPTION	FOR LOCK SERIES	L	PINS	KEY ITEMS	kg		ITEM				
						UNIT	PIECES	Type	Dim.	Hand	Fin.	
	▪ Cylinder	1A610, 11540, 11610, 11615, 50010, 50110, 50115, 50130, 50180, 50330, 54310, 50312, 54315, 54340, 54342, 54350, 54352, 54510, 54512, 54550, 54552, 54570, 54572		8	100670100	0,204	1	1	0Q510	00	0	12
	▪ Cylinder	1A611, 11611, 50111, 50116, 50131, 50181, 50411, 50481, 50511, 50581, 54316, 54341	55,0	8	100670100	0,215	1	1	0Q210	55	0	12
	▪ Cylinder set	1A631, 1A721, 1A731	55,0	8	100670100	0,295	1	1	0Q150	00	0	12
	▪ Cylinder set	50121, 50126, 50141, 50161, 50171, 50421, 50461, 50471, 50521, 50561, 50571	50,0	8	100670100	0,267	1	1	0Q116	00	0	12
		11551, 11631, 11731, 11736, 11931, 11936	55,0	8	100670100	0,295	1	1	0Q120	00	0	12
	▪ Cylinder set	11660, 11670		8	100670100	0,267	1	1	0Q156	00	0	12
	▪ Cylinder set	11521, 11721, 11726, 11921, 11926	55,0	8	100670100	0,295	1	1	0Q149	00	0	12

TYPE		DOOR THICKNESS	PINS	KEY ITEMS	kg		ITEM				
					UNIT	PIECES	Type	Dim.	Hand	Fin.	
	<ul style="list-style-type: none"> Steel padlock plug 2 keys Pickled brass body Complete with plate item 1.07573.08.0 	8		100670100	0,117	1	1	00610	00	0	
	<ul style="list-style-type: none"> Cylinder for outside access device 1.07078.28.0 	8		100670100	0,117	1	1	00610	10	0	12
	<ul style="list-style-type: none"> Cylinder for push-to-open Meroni locks 	8		100670100	0,117	1	1	00610	12	0	12
	<ul style="list-style-type: none"> Key extraction in position (0) Ring item 1.06021.10.0 Deadbolt item 1.06414.20.0 or 1.06414.30.0 to be ordered separately 	17	8	100670100	0,117	1	1	00410	00	0	12
	<ul style="list-style-type: none"> Microswitch (7 A, 250 V) with welding terminals Automatic return to key extraction position (0) Ring item 1.06021.10.0 	17	8	100670100	0,117	1	1	00415	01	0	12
	<ul style="list-style-type: none"> Nickel-plated brass key Bow with removable nylon insert Long key 17 mm Flat profile, thickness 2.9 mm 	8			0,020	50	1	00670	10	0	

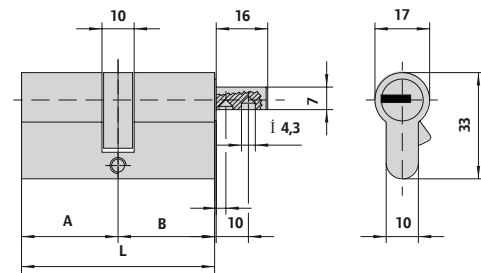
Dimensional drawings



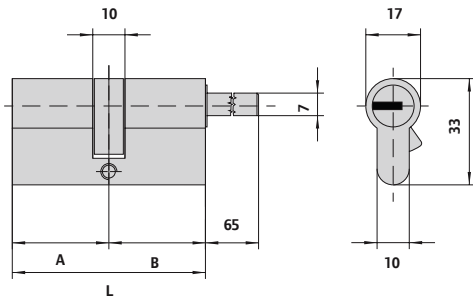
OQ314



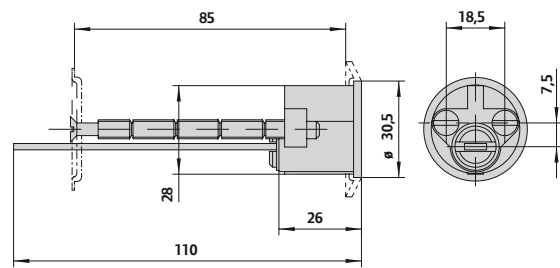
OQ310-OQ311



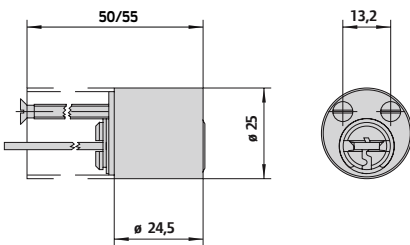
OQ312



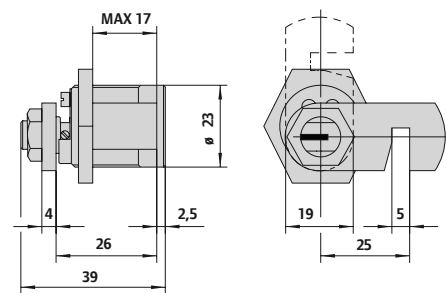
OQ317



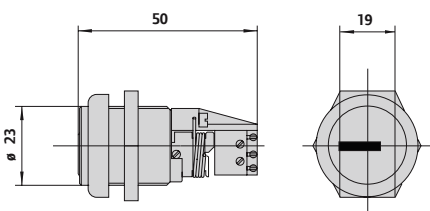
OQ510



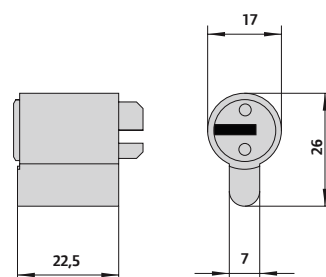
OQ210



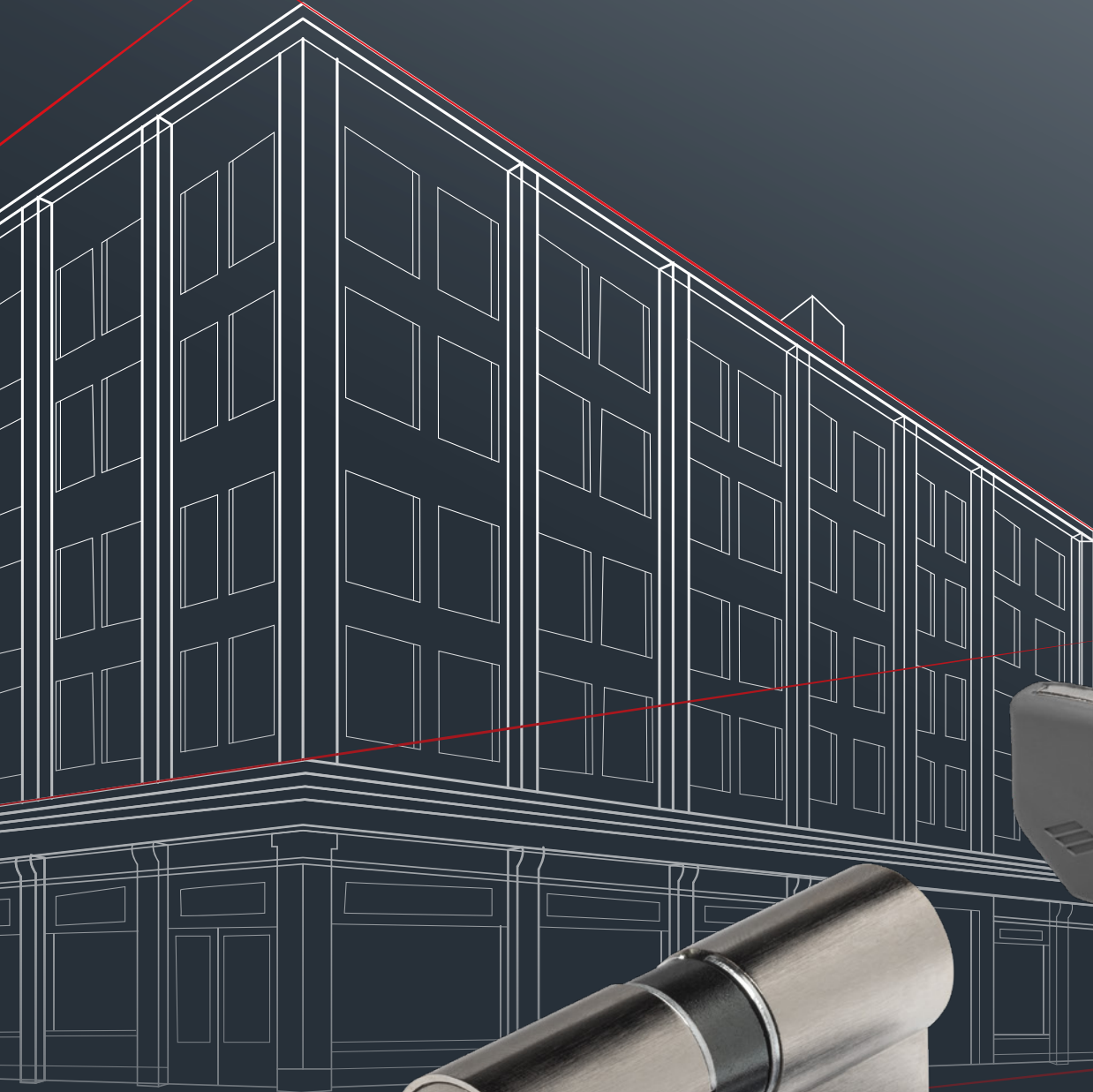
OQ410



OQ415



OQ610





About Allegion

Allegion (NYSE: ALLE) is a global pioneer in seamless access, with leading brands like CISA®, Interflex®, LCN®, Schlage®, SimonsVoss® and Von Duprin®. Focusing on security around the door and adjacent areas, Allegion secures people and assets with a range of solutions for homes, businesses, schools and institutions. Allegion had \$2.7 billion in revenue in 2020, and its security products are sold around the world.

For more, visit allegion.com.



 CISA SpA
Via Oberdan 42
48018 Faenza (RA) Italy

 Ph. +39 0546 677111
Fax +39 0546 677150

 Customer Service and Technical Support
+39 0546 188 0070



cisa.com
cisa.sales@allegion.com